

ICC **INDOFINE Chemical Company, Inc.**

121 Stryker Lane, Bldg. 30, Suite 1 • Hillsborough, NJ 08844 • U.S.A.

Phone: (908) 359-6778 • FAX: (908) 359-1179

website: www.indofinechemical.com

e-mail: chemical@indofinechemical.com

CERTIFICATE OF ANALYSIS

Catalog Number: 026519

Product Name: **CHLOROPHYLL A**

Source: Spirulina

CAS Number: [479-61-8]

Lot Number: 2201638

Chemical Formula: $C_{55}H_{72}MgN_4O_5$

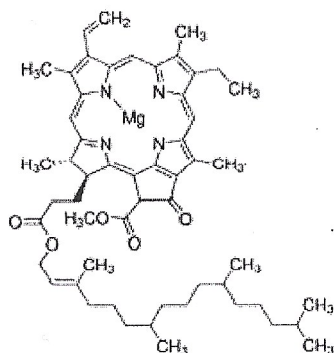
Molecular Weight: 893.49

Appearance: Green solid

NMR (acetone-d6): Conforms to structure

UV VIS: Conforms (Obtained in acetone)

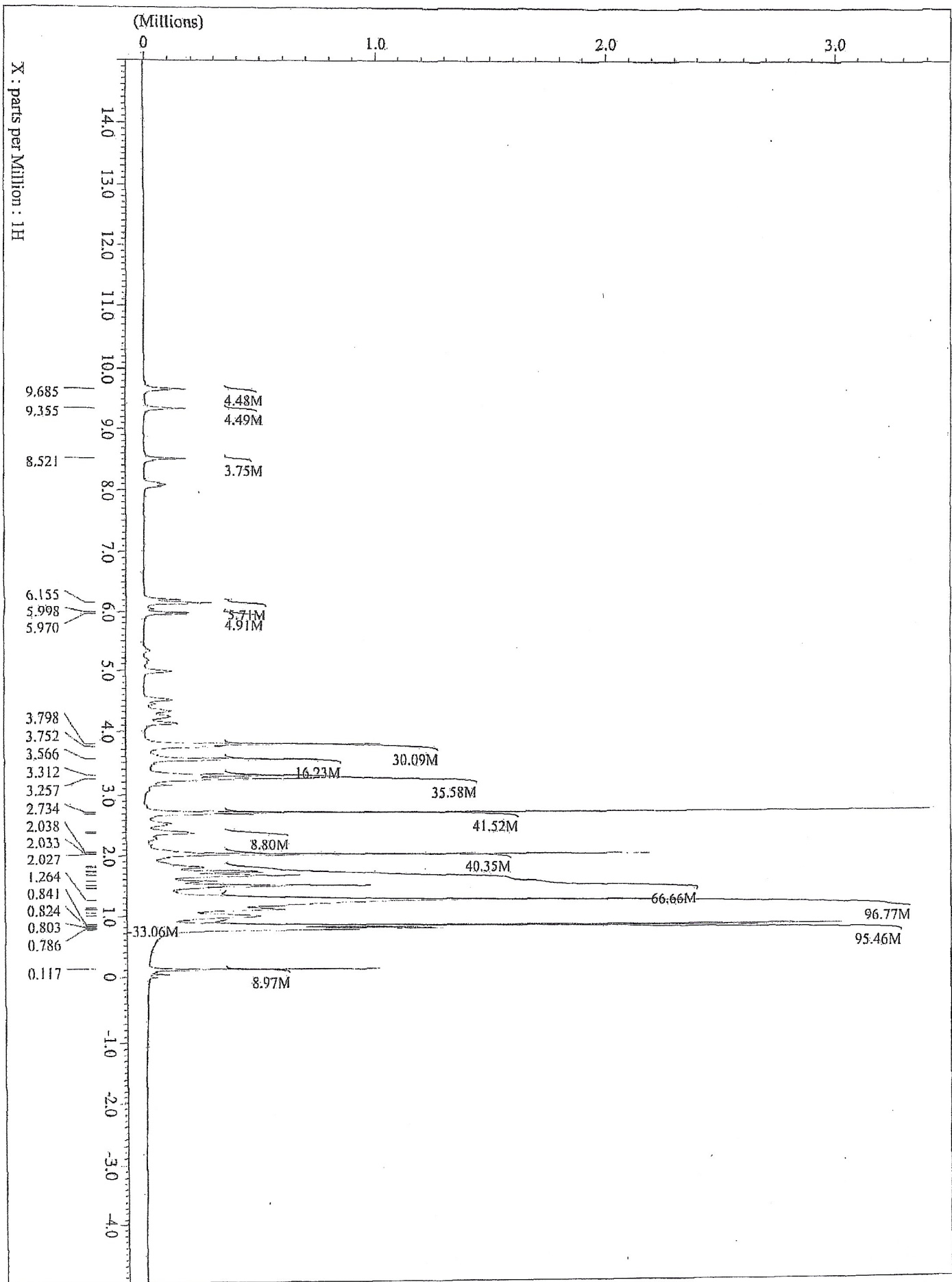
Storage: Store at -20°C



Prepared by:
Ramesh Mandadi
Ramesh Mandadi
Director of Operations

Reviewed and Approved by:
Sujata Moton
Sujata Moton
VP

Catalog No.: 026519
Product Name: Chlorophyll A
Lot No.: 2201638



Catalog No.: 026519
 Product Name: Chlorophyll A
 Lot No.: 2201638

WaveLength Scan
 Readsamples Tabulate +*/Scans Scatter Meth Method SaveClear Print Quit

Scan directory: VIEW AutoPrint: [No] Method name: A:\DEFAULT
 Start w1: 350 nm Autosave: [No] Autosave name: A:\TSCANS
 End w1: 670 nm Scans per sample: 1 Sampling device: None
 Overlay scans: [No] Interval: 35.00 [sec] Scan speed: 600 nm/min
 A:\WORK_004 (600)

Print ↑ ↑ + + Exit
 Zoom ZoomOut Trace Function Autoscale Annotate Print

A:\WORK_004 Scan
 W1 Abs Pick

W1	Abs	Pick
385.0	0.3295	PK
411.5	0.5138	PK
430.5	0.6868	PK
580.0	0.10601	PK
616.0	0.1082	PK
662.0	0.5904	PK

